

WiFi Switching Cloud Keys & Gateways Camera Security Door Access Power Tech New I

WiFi > U7 Pro

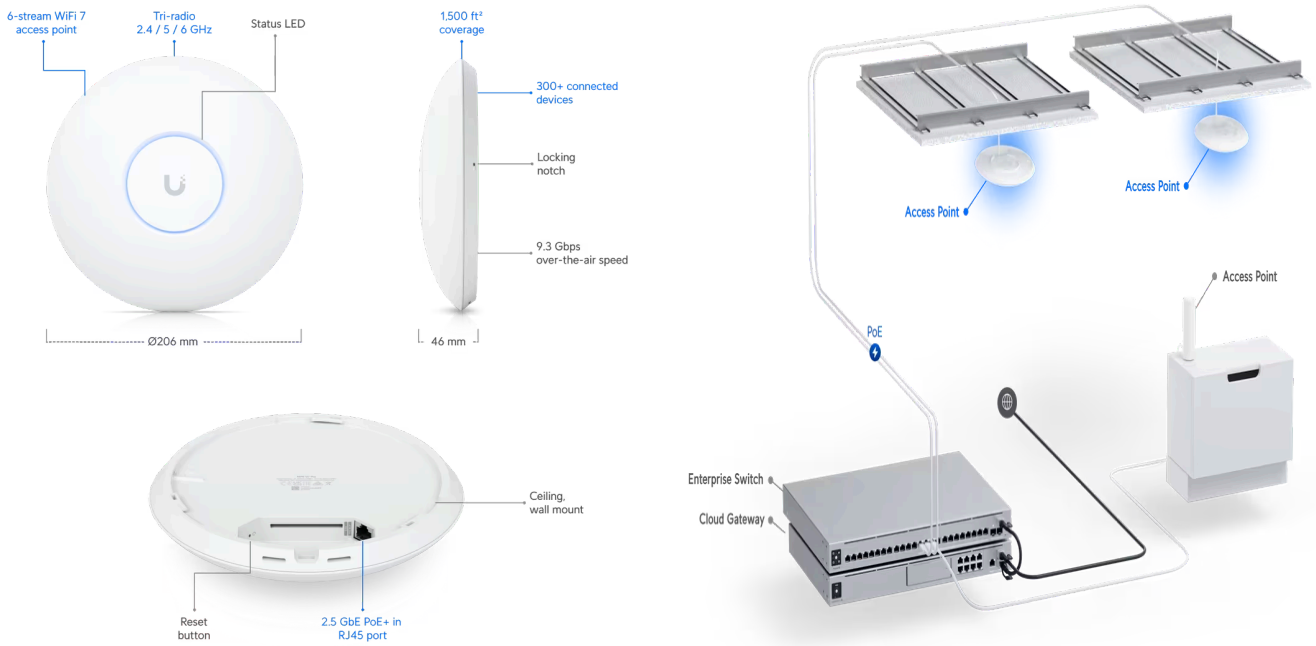
Datasheet

In The Box

Marketing Images

FAQ

Installation Guide



Mechanical

Dimensions

Ø206 x 46 mm (Ø8.1 x 1.8")

Weight

680 g (1.5 lb)

Enclosure material

Polycarbonate, metal

Mount material

Stainless steel (SUS304), galvanized steel (SGCC)

Hardware

Networking interface	(1) 1/2.5 GbE RJ45 port
Management interface	Ethernet
Power method	PoE+
Power supply	UniFi PoE switch
Supported voltage range	44—57V DC
Max. power consumption	21W
Max. TX power	
2.4 GHz	22 dBm
5 GHz	26 dBm
6 GHz	23 dBm
MIMO	
2.4 GHz	2 x 2
5 GHz	2 x 2
6 GHz	2 x 2
Throughput rate	
2.4 GHz	688 Mbps
5 GHz	4324 Mbps
6 GHz	5765 Mbps
Antenna gain	
2.4 GHz	4 dBi
5 GHz	6 dBi
6 GHz	5.8 dBi
LEDs	White/blue
Button	Factory reset
Mounting	Wall/ceiling (Included)
Ambient operating temperature	-30 to 60° C (-22 to 140° F)
Ambient operating humidity	5 to 95% noncondensing
Certifications	CE, FCC, IC

Software

WiFi standards	802.11a/b/g/n/ac/ax/be
Wireless security	WPA-PSK, WPA-Enterprise (WPA/WPA2/WPA3/PPSK)
BSSID	8 per radio
VLAN	802.1Q

Advanced QoS	Per-user rate limiting
Guest traffic isolation	Supported
Concurrent clients	300+

Supported Data Rates

802.11a	6, 9, 12, 18, 24, 36, 48, 54 Mbps
802.11b	1, 2, 5.5, 11 Mbps
802.11g	6, 9, 12, 18, 24, 36, 48, 54 Mbps
802.11n	6.5 Mbps to 300 Mbps (MCS0 - MCS15, HT 20/40)
802.11ac (WiFi 5)	6.5 Mbps to 1.7 Gbps (MCS0 - MCS9 NSS1/2, VHT 20/40/80/160)
802.11ax (WiFi 6/6E)	7.3 Mbps to 2.4 Gbps (MCS0 - MCS11 NSS1/2, HE 20/40/80/160)
802.11be (WiFi 7)	7.3 Mbps to 5.7 Gbps (MCS0 - MCS13 NSS1/2, EHT 20/40/80/160/240/320)

Application Requirements

UniFi Network	Version 8.0.26 and later
UniFi OS	Version 3.2 and later

Stay in Touch

[Terms and Conditions](#) | [Terms of Service](#) | [Privacy Policy](#) | [Return Policy](#) | [Cookies Settings](#)

© 2024 Ubiquiti, Inc. All rights reserved.