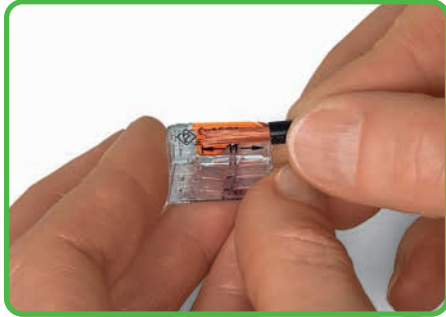


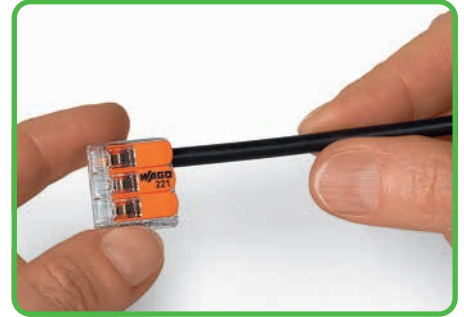
– Description and Handling –



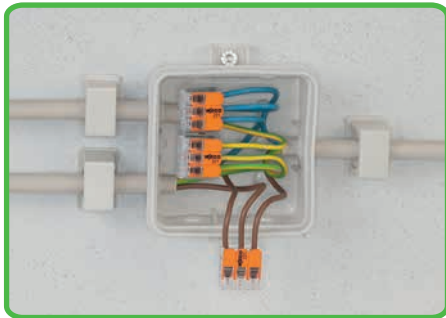
Strip wire to 11 mm / 0.43 in.



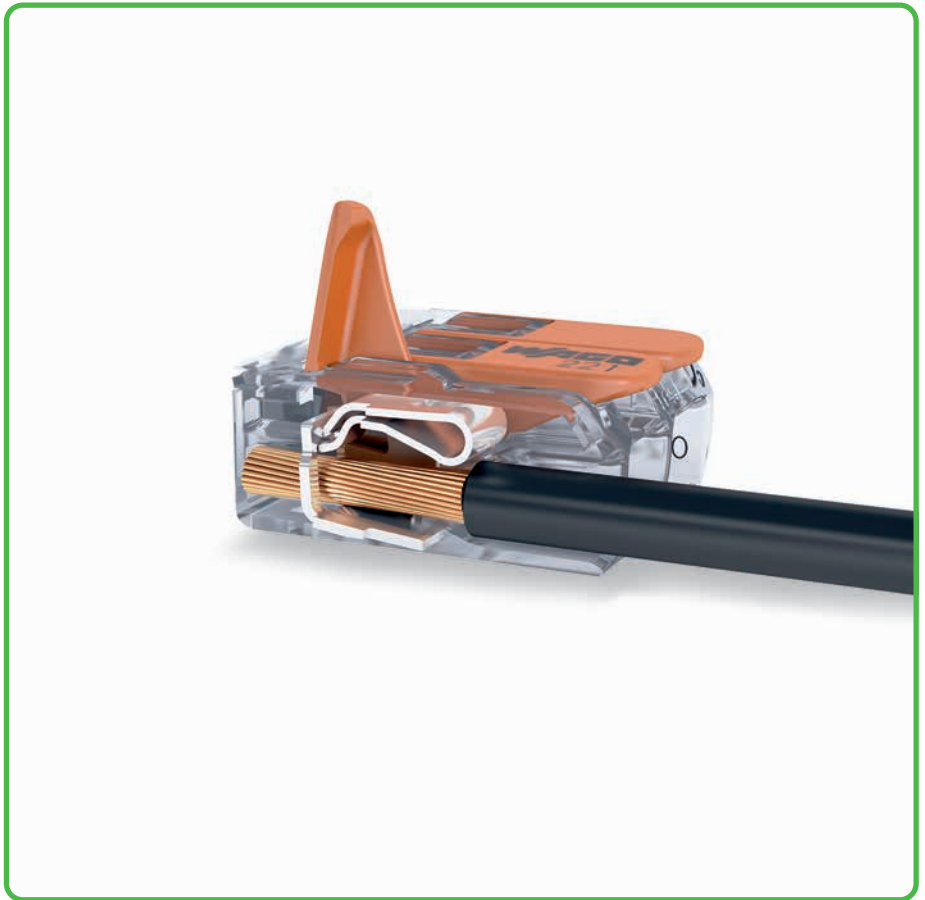
Termination: Open clamping unit using the lever and insert conductor.



Then lower lever to close the clamp.



Wiring fine-stranded conductors in a junction box.



Individual design of low-voltage lighting systems.



Lighting distribution in ceiling canopy



Pendant light connection in suspended ceilings

CAGE CLAMP® clamps the following copper conductors:\*

- solid
- stranded

fine-stranded, also with tinned single strands

fine-stranded, tip-bonded

\* For aluminum conductors, see notes in Section 14.